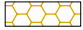
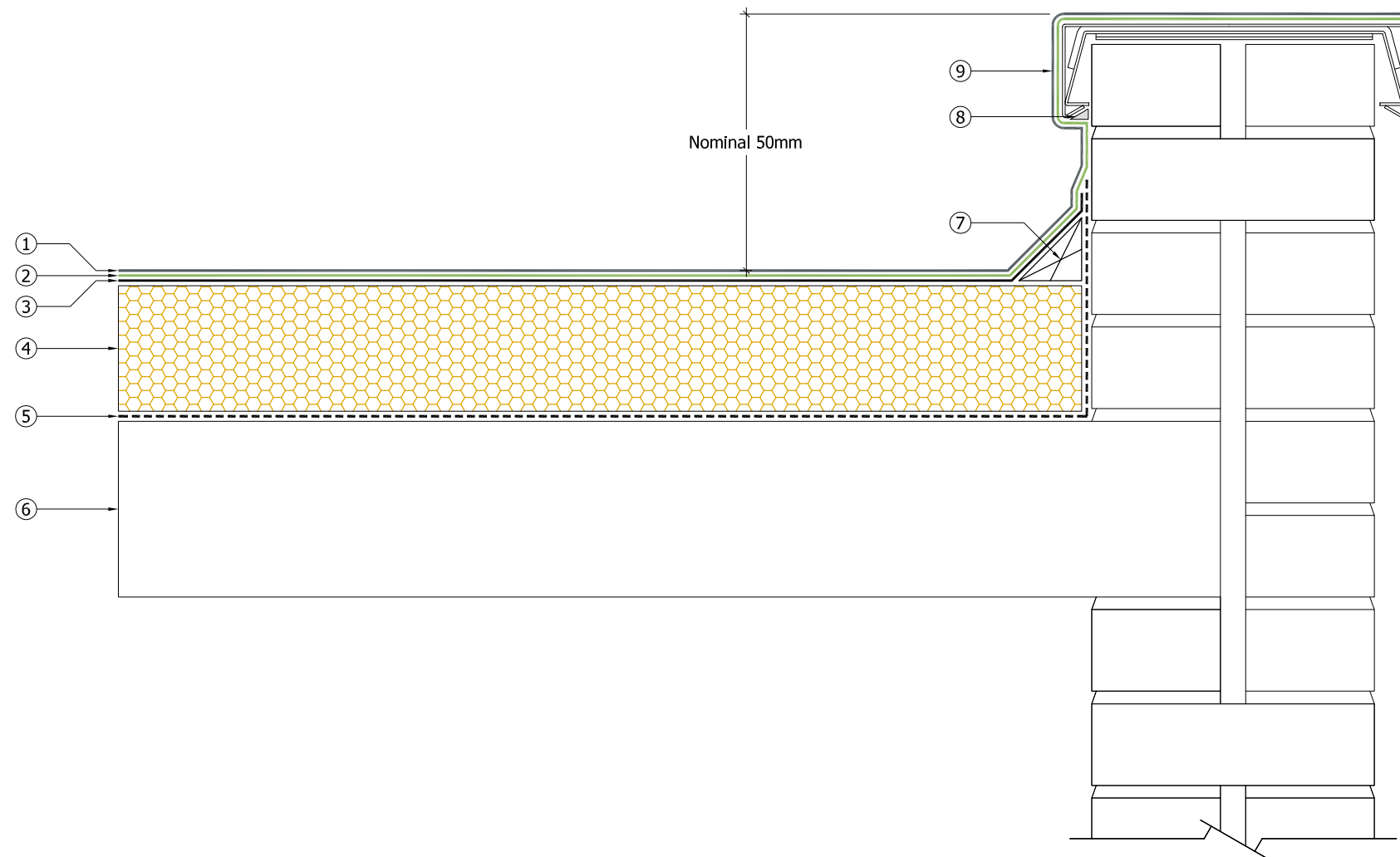


Key

- ① — Decaflex Top Coat applied in strict accordance with Sika Liquid Plastics Project Specification
 - ② — Decaflex Embedment Coat applied at correct coverage rate for the substrate surface conditions embedded with Sika Reemat Premium GFM
 - ③ — Sika Liquid Plastics Carrier Membrane SA applied in strict accordance with Sika Liquid Plastics Specification
 - ④  Decootherm insulation bonded in strict accordance with Sika Liquid Plastics Project Specification
 - ⑤ - - - - S-Vap 5000E SA self adhesive Vapour Control Layer [as required] applied to substrates prepared and primed with Sika Primer 600 in strict accordance with Sika Liquid Plastics Project specification
 - ⑥ Existing substrate prepared in strict accordance with Sika Liquid Plastics Project Specification
 - ⑦ Tanalised timber fillets [as required] bonded with Decostik SP
 - ⑧ SikaHyflex-250 Facade sealant should be used where necessary to fill voids to create a continuous surface on to which the fully reinforced Waterproofing System can be applied
 - ⑨ Existing metal cappings prepared and primed in strict accordance with Sika Liquid Plastics Project Specification; Waterproofing System terminated on the external drip edge
- NOTE:** Bond Break details applied to joints in capping sections to prevent damage during thermal expansion and contraction - refer to the dedicated standard detail for further information



Sika Liquid Plastics
 Sika House
 Miller Street
 Preston
 Lancashire PR1 1EA
 Telephone: 01772 259781
 Email: technical.customer.services@uk.sika.com
www.liquidplastics.co.uk

This drawing is solely intended to illustrate the correct application of Sika Liquid Plastics products and systems. It must be read in conjunction with the appropriate specification and current issue of relevant Product Data Sheets. All elements bearing reference to structural and/or thermal design are shown indicatively and **should not be used** in whole or in part for any aspect of project design without consulting the relevant authorities.

For refurbishment projects, all aspects of the existing roof are deemed to be fully compliant with BS 6229:2003 (Code of Practice for Flat Roofs with Continuously Supported Coverings) or improved upon for instances where these standards are not met.

Site-specific details not covered by our standard range can be obtained by providing relevant information to the email address shown.

Project N^o

DWG N^o Revision

Project:

Drawing Title:
 Built Up Roof Termination and
 Encapsulation of existing cappings

Scale: NTS @ A3 Drawn:

Date:

